



PROMOTIONS

Valid from 1st July to 15th December, 2025

2nd half
2025



MINIATURE SOLID BORING TOOLS FOR HIGH ACCURACY

New **SH725 grade** provides a good combination of wear and fracture resistance, ensuring long tool life and wear prediction.

BUY 4 solid carbide bars

AND

GET 1 corresponding sleeve at

**40 %
additional
discount!**

TinyMiniTurn

Solid Carbide bars (Grade SH725):

JB**

TB**

TinyMiniTurnMulti

Solid Carbide bars (Grade SH725):

TBMFR07** (TinyMiniTurnMulti)

Sleeve:

JBBS

JBBS-4N



TBMFR07**

From drilling to internal, external, and face turning
DC = $\varnothing 3, 4, 5, 6, 7$ mm



e-catalog



MINIFORCETURN CBN INSERT LINE FOR HARDENED STEEL TURNING APPLICATIONS

HP Hardbreaker designed for finishing hardened parts with close tolerances

BUY 6 inserts

AND

GET 1 corresponding toolholder

for 1€

Inserts:

4QS-DXGQ/U

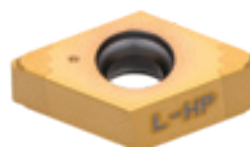
6QS-WXGQ/U

Toolholder:

A/E - SWLXR/L

A/E - SDXXR/L

A/E - SDZXR/L



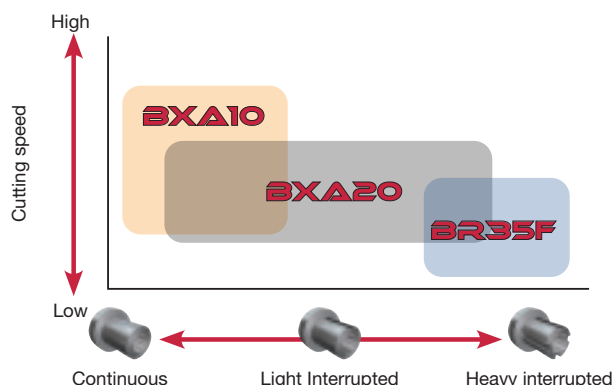
4QS-DXGQ/U insert

- 4 edges, rhombic 55°
- HP chipbreaker, without breaker



6QS-WXGQ/U insert

- 6 edges, Trigon 80°
- HP chipbreaker, without breaker



e-catalog



3D PRESSED-IN CHIPBREAKER SERIES DEDICATED FOR TURNING SMALL PARTS

JP Chipbreaker, first choice chipbreaker for high precision finishing

JS Chipbreaker, first choice chipbreaker for finish cutting

BUY 30 inserts

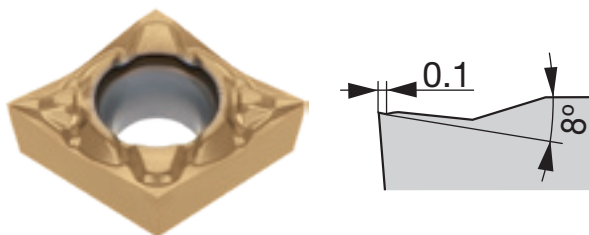
AND

GET 10 corresponding
inserts

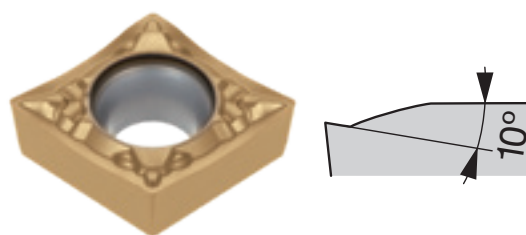
for
1€

Available Grades SH7025, SH725, SH730, AH6225,
AH8015, AH725, NS9530, KS05F and AT9530

JP Chipbreaker



JS Chipbreaker



- Stable chip control across wide feed and D.O.C. ranges
- Prevents chip nesting, vibration, and burrs
- Enhances part quality and shop productivity
- Versatile geometry for broad application use

- Light cutting action with excellent chip control
- Steep edge angle reduces cutting load
- Unique protrusion manages chip flow across all depths

e-catalog



INNOVATIVE GROOVING TOOLS WITH 4 CUTTING-EDGE INSERTS

The ground insert clamps securely into a unique insert pocket, ensuring high rigidity and repeatability. It is paired with high-productivity PVD grades such as AH7025, AH8005, and AH6235

BUY 10 inserts

AND

GET 1 corresponding toolholder at

**60 %
additional
discount!**

BUY 10 inserts

AND

GET 1 corresponding CHP toolholder at

**40 %
additional
discount!**

Inserts (Grades AH7025, AH8005 and AH6235):

TCL27/38

TCS27

TCM27

Toolholder:

STCR/L

STCR/L-CHP



e-catalog



NEW SMALL-SIZE DOUBLE-ENDED INSERTS FOR INTERNAL GROOVING

Optimized screw placement boosts clamping strength and chatter resistance, while larger pockets improve chip evacuation and internal coolant enhances performance.

BUY 20 inserts

AND

GET 1 modular head or toolholder

*for
1€*

BUY 20 inserts

AND

GET 1 corresponding CHP toolholder at

*50 %
additional
discount!*

CTIR**S

S-CTIRS-H

QC-JTTER/LS

Inserts:

DGS*S (AH725, SH7025)

DTR*S (AH7025)

STV*S (AH725)

Toolholder:

CTIR**S

Modular head:

S-CTIRS-H (BoreMeister)

QC-JTTER/LS (ModuMiniTurn)



DGS*S

Lower cutting force and superior sharpness
CW = 2 - 3 mm



DTR*S

Full radius type
CW = 2 - 3 mm



STV*S

For profiling applications



e-catalog



Member IMC Group
Tungaloy

HIGH PRECISION GROOVING AND THREADING TOOL SERIES FOR CNC AUTOMATIC LATHES

Perfect for grooving and threading bar stocks of 12 mm or smaller diameters
Available in 8x8, 10x10, and 12x12 mm square shanks with high-pressure coolant

BUY 10 inserts

AND

GET 1 corresponding toolholder

for 1€

BUY 10 inserts

AND

GET 1 corresponding CHP toolholder at

50 % additional discount!

Inserts (Grades SH725):

VGP08

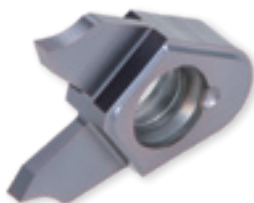
VGP10

VGT10F

Toolholder:

SVER/L

SVER/L-CHP



VGP08... and VGP10

for Grooving

2 corner insert

CW = 0.33 - 1 mm



VGT10F...

for Threading

2 corner insert

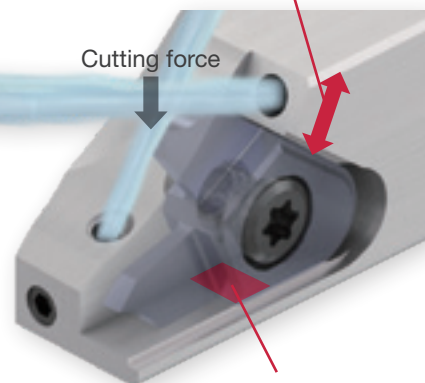
Pitch = 0.4 - 2 mm

Cutting edge angle =

55°, 60°

A thick support restricts the insert movements during machining

Cutting force



Improves the cutting edge repeatability

e-catalog



VERSATILE SHOULDER MILLING CUTTER WITH UNIQUE V-SHAPED INSERT BOTTOM FOR MAXIMUM PRODUCTIVITY

Unmatched stability across all materials, with an innovative clamping system

BUY 10 inserts per
AND pocket up to max 50 inserts
GET 1 Cutter

for
1€

Limited up to diameter 125 mm

Inserts (Grades: AH3225, AH3135, AH8015,
AH120, AH130, T1215, T3225 and KS05F):

AVMT04, AVGT06, AV*T12, AV*T18

Cutter bodies:

Bore type:

TPAV**

DC = Ø40 – Ø125 mm

Shank type:

EPAV**

DC = Ø6 – Ø32 mm

Modular type:

HPAV**-M (TungFlex connection)

DC = Ø10 – Ø40 mm

HPAV06-S (TungMeister connection)

DC = Ø10 – Ø16 mm



AVMT04
APMX:
4 mm



AVGT06
APMX:
6 mm



AV*T12
APMX:
11.5 mm



AV*T18
APMX:
16.5 mm



e-catalog



Member IMC Group
Tungaloy

HIGH PRODUCTIVE AND COST-EFFECTIVE SHOULDER MILLING CUTTER

Economical shoulder mill with an innovative 6-edged geometry offers maximum performance in various applications

BUY 10 inserts per pocket up to max 50 inserts
AND **GET** 1 Cutter

for
1€

Limited up to diameter 125 mm

Insert (Grades: AH3225, AH3115, AH120, T1215, T3225):

TNMU07-MJ, TN*U12-MJ, TNMU12-NMJ

Cutter bodies:

Bore type:

TPTN07/12

DCX = $\varnothing 40 - \varnothing 125$ mm

Shank type:

EPTN07/12

DCX = $\varnothing 18 - \varnothing 40$ mm



TNMU07-MJ
with built-in wipers
APMX = 6.5 mm



TNGU12-MJ
with built-in wipers
APMX = 11 mm



TNMU12-R-MJ
Radius insert
APMX = 11 mm



TNMU12-NMJ
Serrated insert
APMX = 11 mm



e-catalog



HIGH FEED MILLING CUTTERS ENABLING LONG OVERHANG APPLICATIONS AND EXTENDED TOOL LIFE

Optimal depth of cut can be selected in machining various work materials

BUY 10 inserts per
AND pocket up to max 50 inserts
GET 1 Cutter

for
1€

Limited up to diameter 125 mm

Inserts (Grades: AH3225, AH3135,
AH120, AH130 AH8015):

SWMT09/15ZER
SWMT09/15UER
SWMW09ZSR
SWMW09/15USR

Cutter bodies:

Bore type:

TXSW09/15

DCX = $\varnothing 40 - \varnothing 125$ mm

Shank type:

EXSW09

DCX = $\varnothing 25 - \varnothing 32$ mm

Modular type:

HXSW09 (TungFlex connection)

DCX = $\varnothing 25 - \varnothing 32$ mm



SWMT09/15ZER**

APMX:
SWMT09**ZER: 1.5 mm
SWMT15**ZER: 2.5 mm



SWMW09ZSR

APMX: 1.5mm



SWMT09/15UER**

APMX:
SWMT09**UER: 1 mm
SWMT15**UER: 2 mm



SWMW09/15USR

APMX:
SWMW09**USR : 1mm
SWMW15**USR : 2mm



e-catalog



ULTIMATE HIGH FEED MILLING CUTTER SERIES FOR MAXIMUM PRODUCTIVITY

High-feed cutters reduce machining time in a wide range of applications

BUY 10 inserts per pocket
AND **GET 1 Cutter**
up to max 50 inserts

for 1€

Limited to inserts 03 type

Inserts (Grades: AH3225, AH8005, AH8015, AH120, AH130, AH725):

LN*U03-MH/MJ/ML/MS

Cutter bodies:

Bore type:

TXN03R...

DCX = $\varnothing 40$ - $\varnothing 50$ mm

Shank type:

EXN03R... (Short type)

EXN03R...L (Long type)

DCX = $\varnothing 16$ - $\varnothing 40$ mm

Modular type:

HXN03R... (TungFlex connection)

DCX = $\varnothing 16$ - $\varnothing 40$ mm



LN*U0303ZER...

For low cutting forces
APMX = 1.0 mm



LN*U0303UER...

For long tool life and reduced vibration
APMX = 0.9 mm



Video



For more information

EXCHANGEABLE HEAD DRILL SYSTEM FOR SUPERIOR DRILLING PERFORMANCE AND LONG TOOL LIFE

Quick drill tip change for reduced machine downtime.

Tool inventory and management costs are significantly reduced as there is no need for regrinding.

BUY 4 drill heads

AND

GET 1 drill body at
up to 3xD

50 %
*additional
discount!*

BUY 6 drill heads

AND

GET 1 drill body at
up to 5xD

50 %
*additional
discount!*

BUY 8 drill heads

AND

GET 1 drill body at
up to 8xD

50 %
*additional
discount!*

Drill heads

(Grades: AH725, AH9130, KS15F):

DMP, DMC, DMF, DMH, DMN, DMM

Drill bodies:

TID-F (1.5xD, 3xD, 5xD, 8xD)

TID-R (2xD, 3.5xD, 6xD, 8xD)

TIDC (3xD, 5xD)

Modular drill bodies:

TID-M (2xD, 3xD)

TID-S (2xD)

TID-L-A-M

e-catalog



DRILL HEADS LINEUP



DMP

Drill dia.:
ø6 - ø25.9 mm

General purpose drilling head ideal for various drilling applications



DMC

Drill dia.:
ø6 - ø25.9 mm

High-precision head with double margin and self-centering edge



DMF

Drill dia.:
ø6 - ø25.9 mm

180° flat edges for counterboring and flat bottoms



DMH

Drill dia.:
ø6 - ø25.9 mm

General purpose head with enhanced cutting edge



DMN

Drill dia.:
ø6.8 - ø19.5 mm
Drill head with sharp edges for non-ferrous materials



DMM

Drill dia.:
ø10 - ø16.7 mm
General purpose drilling head for Stainless Steel materials

DRILL BODIES LINEUP



TIDC

Drill dia.:
ø7.5 - ø19.9 mm
3xD and 5xD



TID-F

Drill dia.:
ø6 - ø25.9 mm
1.5xD, 3xD, 5xD, 8xD



TID-R / TID-R-E

Drill dia.:
ø6 - ø19.9 mm
2xD, 3.5xD, 6xD, 8xD

MODULAR DRILL BODIES LINEUP

video



TID-M

Drill dia.:
ø6 - ø18.9 mm
2xD and 3xD
TungFlex connection



TID-S

Drill dia.:
ø6.5 - ø10.9 mm
2xD
TungMeister connection

video



TID-L-A-M

Drill dia.:
ø6.5 - ø16.9 mm
TungFlex connection
Drilling+Chamfering /
pre-thread Drilling

INDEXABLE DRILL WITH ECONOMICAL 6 CUTTING EDGES INSERT

AH7020 and AH7030 insert grades developed specifically for drilling applications for prolonged insert tool life.

BUY 20 inserts

AND

GET 1 drill body at

50 %
additional discount!

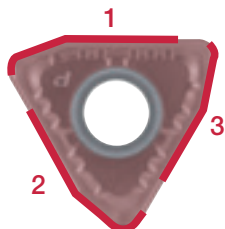
Inserts (Grades: AH7020, AH7030):

WWMU-DJ / -DS

Drill bodies:

TDS-F (2xD, 3xD, 4xD)

Peripheral cutting edges



Center cutting edges



TDS-F

Drill dia.:
ø20 - ø54 mm
2xD, 3xD, 4xD

e-catalog



A WIDE RANGE OF INDEXABLE DRILLS FOR VARIOUS APPLICATIONS

AH7020 and AH7030 insert grades developed specifically for drilling applications for prolonged insert tool life.

BUY 20 inserts

AND

GET 1 drill body at

50 %
additional discount!

Inserts (Grades: AH7020, AH7030):

XPMT-DJ / -DS / -DW

Drill bodies:

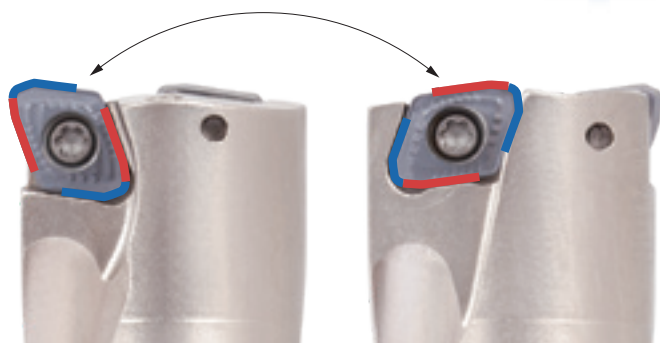
TDX-F (2xD, 3xD, 4xD, 5xD)



TDX-F

Drill dia.:

ø12.5 - ø54 mm
2xD, 3xD, 4xD, 5xD



One insert fits both center and peripheral edges,
reducing inventory and cost.

e-catalog



UNBEATABLE CERAMIC CUTTER: AS SMALL AS Ø16 MM FEATURING 3 INDEXABLE INSERTS

Enhanced clamping system prevents insert movements and ensures high stability during machining

BUY 10 inserts per
pocket up to max 50 inserts
AND
GET 1 Cutter

for
1€

BUY 10 inserts per
pocket up to max 50 inserts
AND
GET 1 Modular cutter

for
1€

Cutter bodes:

Shank type:

JRFMH**E

DCX = Ø16 – Ø32 mm

Modular type:

JRFMH**MM

DCX = Ø16 – Ø32 mm



RNGF

APMX = 1 mm



e-catalog



PRODUCTIVE CBN GRADES SERIES FOR HARDENED STEEL AND CAST IRON MACHINING

BUY 2 inserts

AND

GET 2 Corresponding
inserts at

**50 %
additional
discount!**

Grades:

BHN320, BHN330 (Coated) - for Hardened materials

BH320, BH330, BH340 (Uncoated) - for Hardened materials

BK310, BK320 BK350 (Uncoated) - for Cast Iron

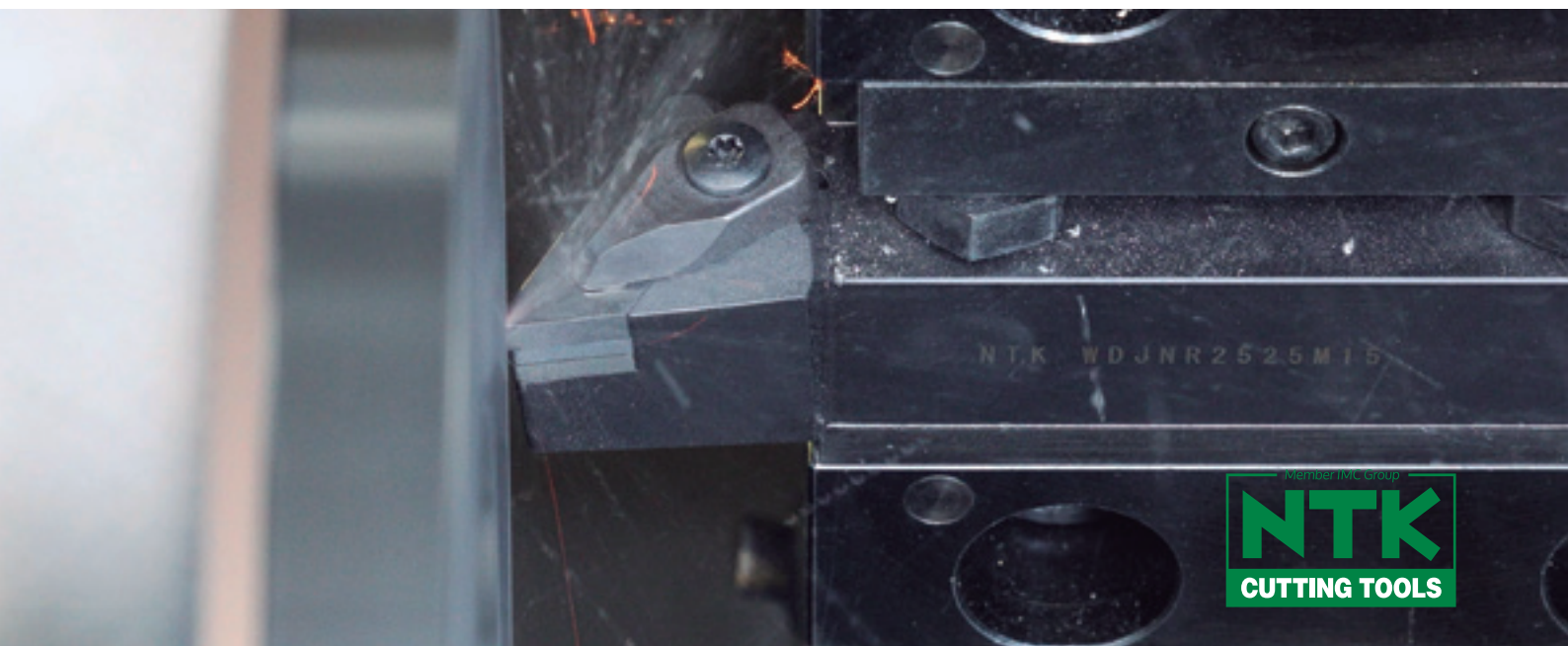
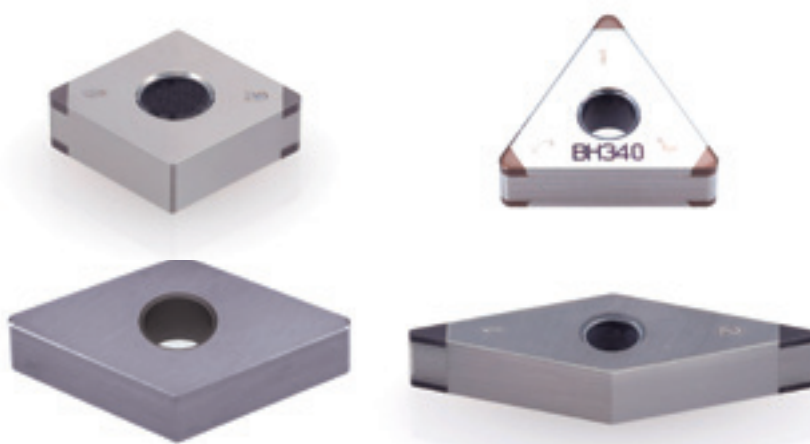
Geometries:

CNGA

DNGA

TNGA

VNGA



TMV chipbreaker wiper inserts

Valid from 1st July to 15th December, 2025

NTK

TURNING & MINIATURE

OUTSTANDING CHIPBREAKER FOR CONVENTIONAL AND VIBRATION MACHINING

TMV-wiper insert delivers superior surface finish even at high feed rates, contributing to longer tool life by enabling increased feed.

BUY 20 inserts

AND

GET 10 Corresponding inserts

for
1€

Inserts (Grades NTK650, ST4):
DCGT



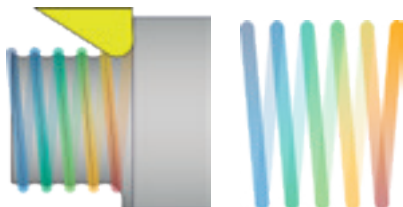
DCGT

Shape to prevent cutting edge damage from chipping

Rake face shape to withstand high cutting feeds

Controls chip flow reliably

Conventional Tool Path Length



Conventional feed: **0.05 mm/rev**

Tool path length: **31.4 m**

TMV-WP Halves Your Tool-Path Length at High Feeds



TMV-WP feed: **0.10 mm/rev**

Tool path length: **15.7 m**

Faster cycle times thanks to higher feed rates

Wiper geometry preserves a fine surface finish

Higher feed = shorter tool-path length = longer tool life

e-catalog



The Front Max

Valid from 1st July to 15th December, 2025

NTK

TURNING & MINIATURE

EFFICIENT SINGLE-PASS TURNING WITH DEPTHS OF CUT UP TO 5.0 MM

Achieve up to 5.0 mm depth of cut with TFX advanced insert geometry and coolant-through holders for superior chip control, surface finish, and stability.

BUY 20 inserts

AND

GET 1 Corresponding toolholder

*for
1€*

BUY 20 inserts

AND

GET 1 Corresponding coolant through toolholder

*50 %
additional
discount!*

Inserts (Grades DM4, ST4):

TFX

Toolholders:

TFT

TFT-OH2

TFTR-OH3



e-catalog





11-1 Yoshima Kogyodanchi
Iwaki 970-1144 Japan
tungaloy.com



2808 Iwazaki Komaki-City,
Aichi 485-8510, Japan
ntkcuttingtools.com

Leading in Innovation

Distributed by:



Jun. 2025 (TJ)